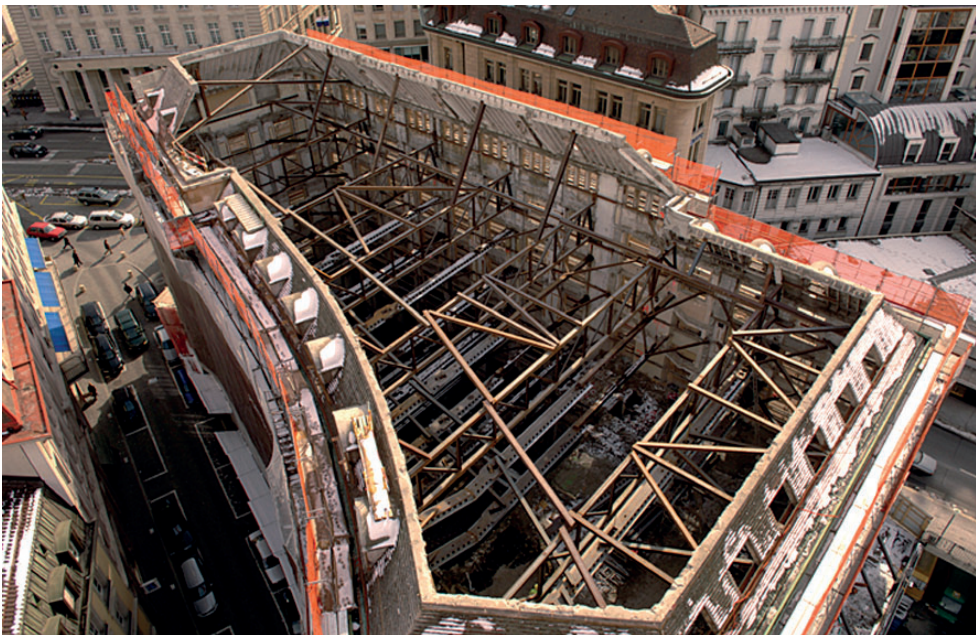




PORTES ST-FRANCOIS IN LAUSANNE

photos: UBS - 1046

Following its merger with SBS, UBS owned two historic bank headquarters in the center of Lausanne. The question arose as to the change of use of one of them without undermining its architectural features. Whilst preserving the facades, the interior layout was completely redesigned. A shopping mall connects the upper entrance at Place St-François to the lower entrance at Place Centrale by escalators on four levels. The upper levels are used for administrative purposes.



CLIENT
UBS SA

ARCHITECT
Arcature, Renens
Retail Rites, Lausanne

TEKHNE SERVICES
Client assistance:
- feasibility study
- design competition
- planning
- tender procedure for total professional services contractor
- site supervision

DATE | COST
2003-2007
CHF 30 million

DIMENSIONS
Floor area 12,900 m²
Gross volume 47,000 m³